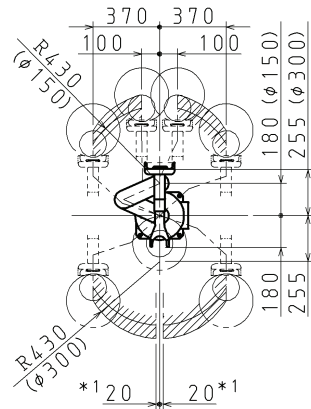
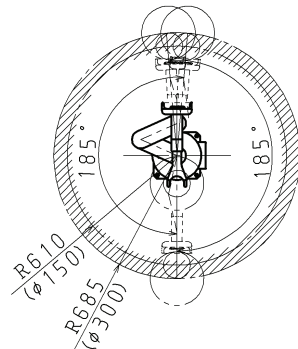


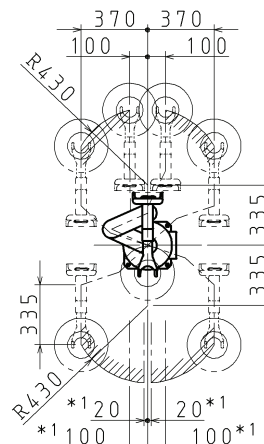
M50	Mapping Sensor offset
HOME	HOME position
RP	Reset Position
±ML	Mechanical Limit
±EL	Electric Limit
±SL	Soft Limit



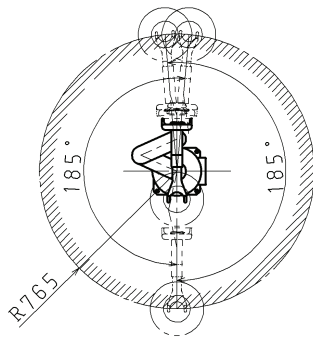
Rectangular coordinates
Mapping range
(S=1:30)



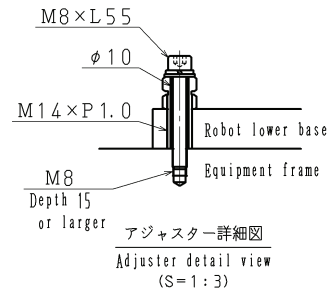
Cylindrical coordinates
Mapping range
(S=1:30)



Rectangular coordinates
Operating range
(S=1:30)

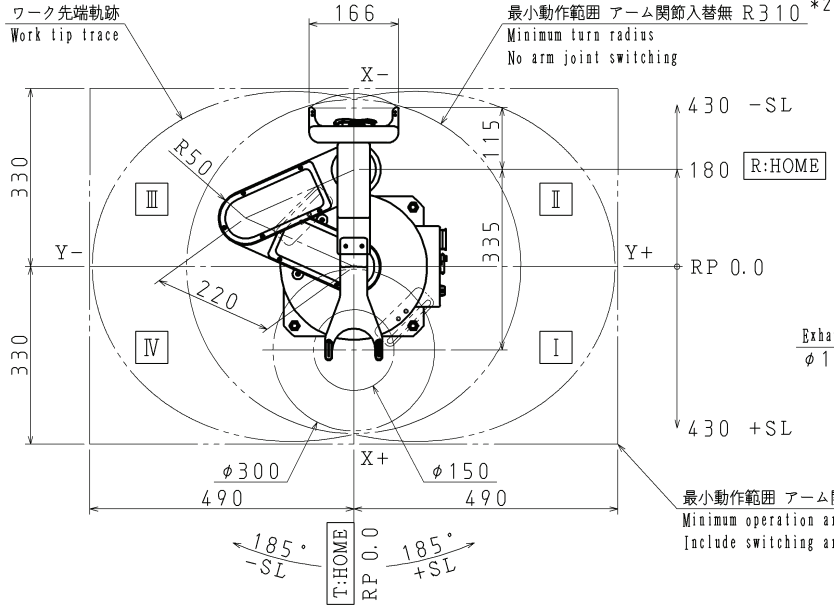


Cylindrical coordinates
Operating range
(S=1:30)

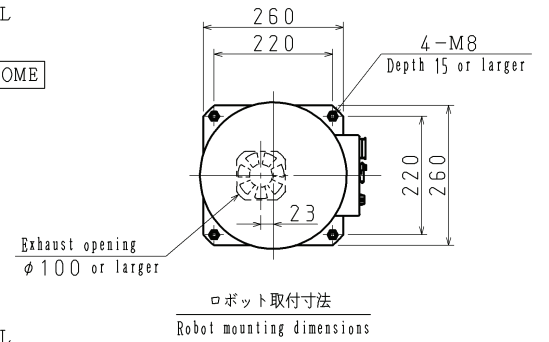


*1) 直角座標動作は、中央±100mmでの伸縮動作が遅くなります。中央で使用する場合は、円筒座標動作での使用をお勧めします。また、中央±20mmの範囲での直角座標動作はできません。In case of rectangular operating, extension/retraction operation is slow the center (±100mm) of unit. Thus, it is preferable to adopt a cylindrical operating for using arm near the center of unit. Rectangular operating can't move in the center ±20mm.

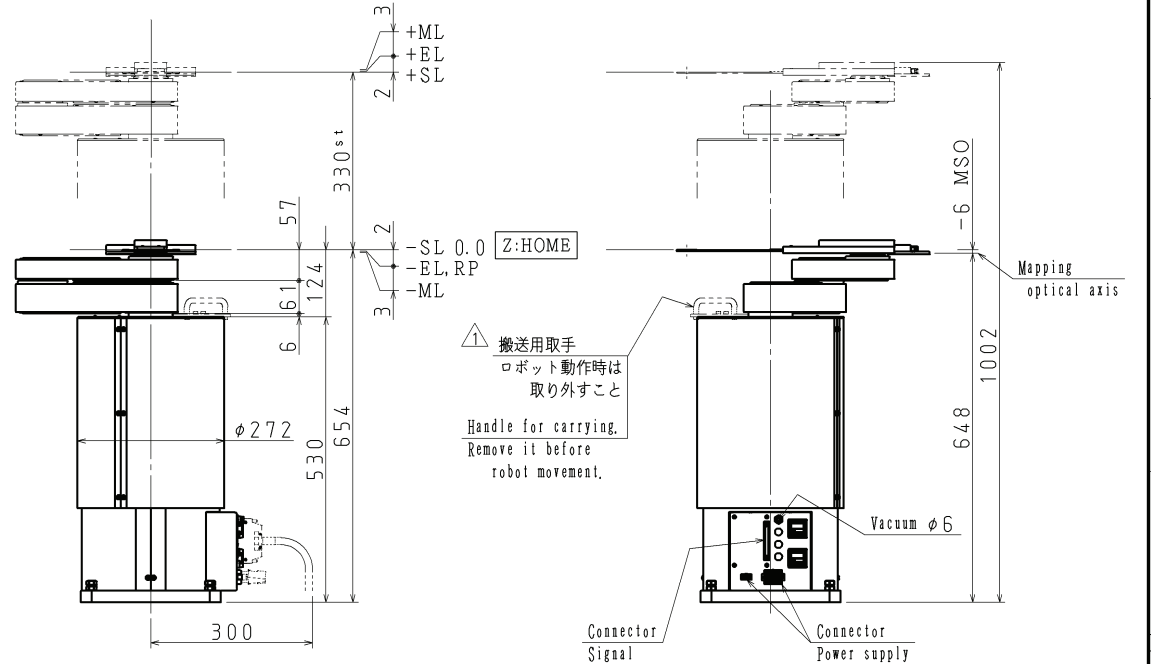
*2) ロボットは、最小動作範囲から20mm以内に干渉物が無いよう配置して下さい。なお、最小動作範囲はアクセスポイントによって異なる場合があります。Place the robot not to interfere with any object within the minimum operation range +20mm area. Minimum operation range may differ depend on the access point.



最小動作範囲 アーム関節入替有 *2
Minimum operation area
Include switching arm joint



ロボット取付寸法
Robot mounting dimensions



1) 搬送用取手
ロボット動作時は
取り外すこと
Handle for carrying.
Remove it before
robot movement.

TAZMO					MODEL	TT300A-RAANVT	
SCALE	DRAW	DESIGN	CHECK	APPROVE	NAME	Outline Drawing	
	2012.12.27	2012.12.27	13.02.08	13.02.08			
Rev.No.	Add Handles	2013.02.07	Matsukawa	1:10	Matsukawa	Nishijima	K.Yamazoe
	Description				No.	88075612	