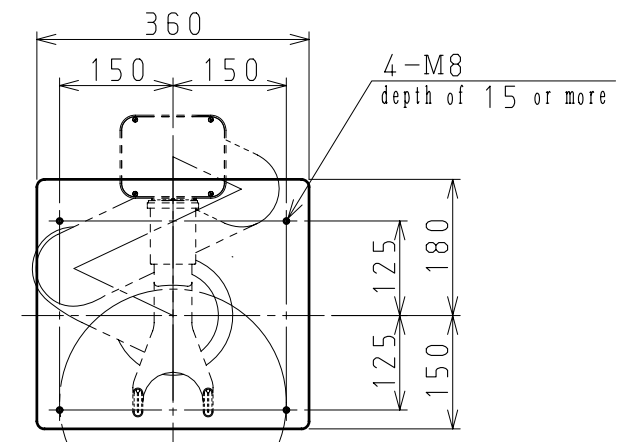
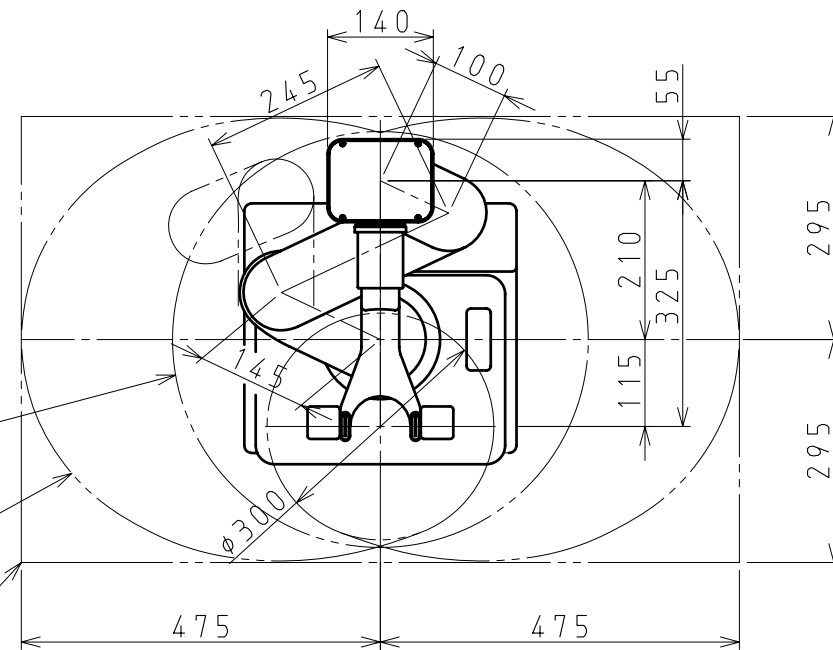


operating range
Polar coordinates
(S=1:30)

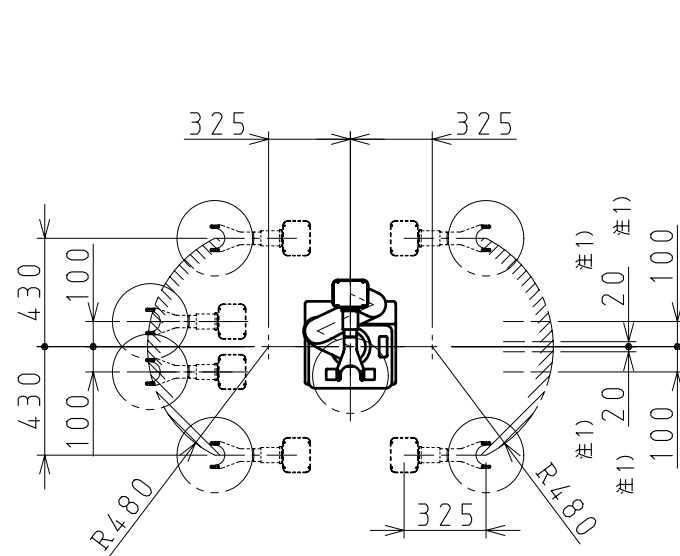
Smallest movement range R275
There is no arm joint permutation

Work tip trace

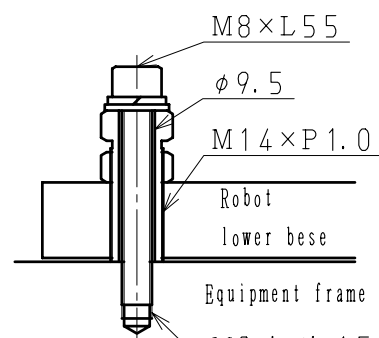
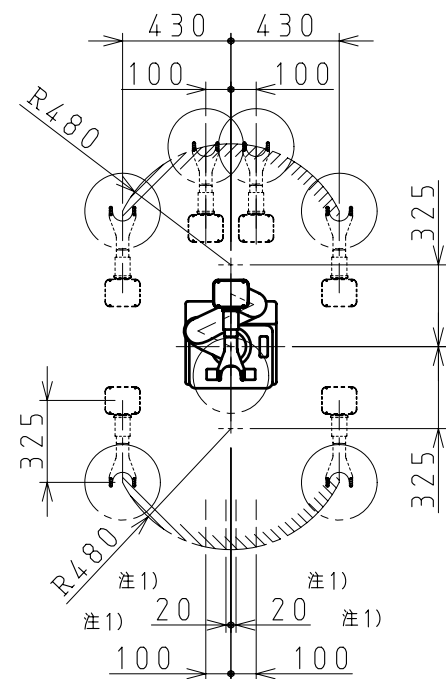
There is a smallest movement range arm joint permutation



ロボット取付寸法

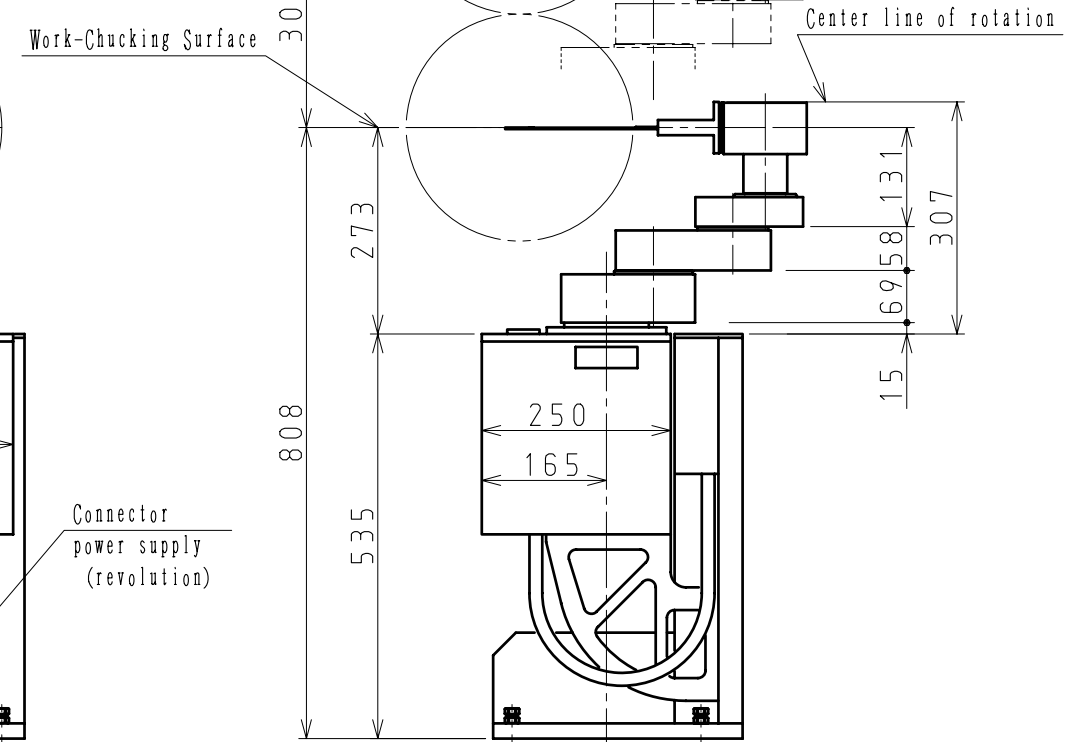
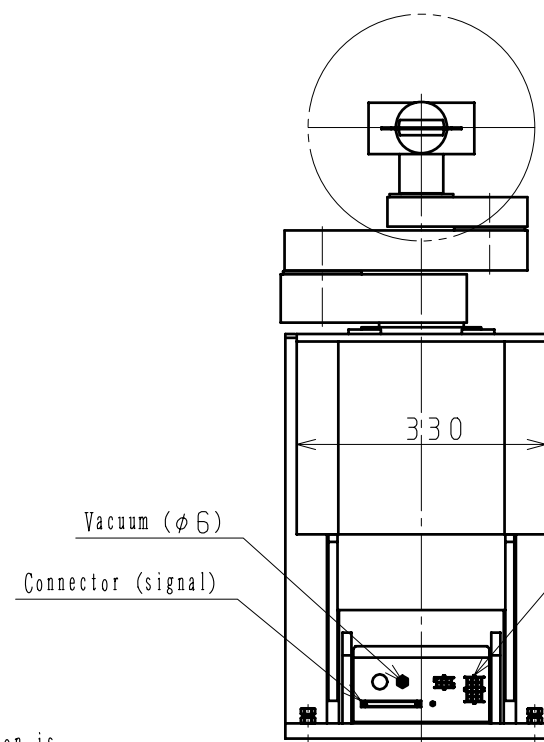


operating range
Rectangular coordinates
(S=1:30)



Adjuster detail view
(S=1:2)

- note1) In case of rectangular operating, extension/retraction operation is slow the center [± 100 mm] of unit. Thus, it is prefer able to adopt a polar operating for using arm near the center of unit. Rectangular operating can't move in the center ± 20 mm.
- note2) Place the robot not to interfere with any object within the min. operation range ± 20 mm area. Min. operation range may differ depend on the access point.



		TAZMO		MODEL S0614 (MTQ-DC2-TV)	
SCALE	DRAW	DESIGN	CHECK	APPROVE	NAME
1:10	2015.07.23	2015.07.23			ロボット外観図 Robot Outline Drawing
Rev. No.	Description				No. 88092577